

Hand over your controls to...

AerialACE
Application Controller Extension



- Low Cost Variable and Constant Rate Flow Control
- Automatic Boom Control
- Compatible with AirStar M3 Systems

The Aerial Application Control Extension (AerialACE) represents a breakthrough in affordable application control for aerial applicators. Now, you can easily add variable rate flow control to your list of services. Simple installation and operation allow for hands-free flow and boom control.



7560 E. Redfield Rd • Suite B • Scottsdale • Arizona • USA • 85260 • Phone (480) 348•9919 • Fax (480) 348•6370

FOCUS ON FLYING

- Focus on flying - automated flow control allows you to focus on flying
- Flip the easy-to-reach override switch to take over manual control at any time
- Reset the easy-to-reach circuit breaker in case it is tripped for any reason

PROVIDE PRECISE APPLICATION

- Accurately apply wet product to all types of field shapes using a variable or constant rate
- Automatically turn the boom off and on with AerialACE at user-defined field boundaries.
- Automatically apply the proper rate at the right time - AerialACE's fast electric motor with stainless steel ball valve and meter reacts precisely
- Monitor automatic and manual flow control

MAINTAIN FLEXIBILITY

- Works with a variety of valve and meter brands and sizes to fit all types of applications
- Compatible with Satloc's AirStar M3 (software supports full flow control functionality), AirStar 99.5, Satloc LITE, and other guidance systems
- Designed to be modular - Satloc designed AerialACE with the ability to support other components based on future needs
- Uses flow rates that range from 40 to 400 gallons per minute (based on standard configuration)

RELIABLE AND RUGGED

- Remain confident that AerialACE's sealed components will withstand tough flying conditions
- Expect years of unmatched performance from the waterproof, dustproof, and shock-resistant system

AERIALACE FEATURES

- Smart flow system for variable and constant rate applications
- Small, rugged controller box with metal connections
- Stainless steel valve and meter are standard
- Override switch for manual control
- Functional support for future components and upgrades including:
 - Distance/speed based output
 - Interface to peripheral components
- Environmentally sealed components

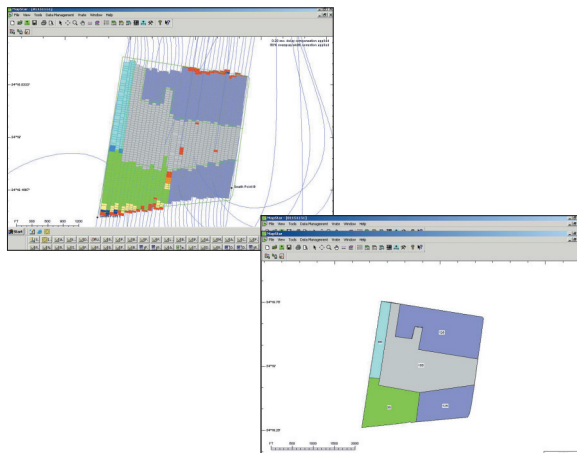
AERIALACE SYSTEMS

Standard System includes:

- AerialACE Controller
- Fast 2" Motor/Valve (other sizes available)
- Precise 2" Flow Meter (other sizes available)
- Cables, remote switches and plumbing

AERIALACE SPECIFICATIONS

- Voltage Input: 10-32 V
- Flow Rate: 40 – 400 GPM standard (other flow ranges available)
- Controller Dimensions: 4.2H x 6.5W x 4D inches (10.7H x 16.5W x 10.2D cm)
- Controller Weight: 2.5 lb (1.13 kg)
- Communication Ports: 3 serial, 1 CAN



Specifications subject to change without notice.



Avery label #05260 (laser print)