

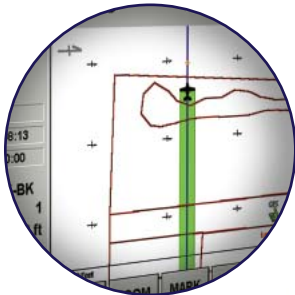
# Air IntelliFlow<sup>®</sup>

## Automatic airborne flow control system



### Air IntelliFlow<sup>®</sup>

With the IntelliFlow control system on board, in-flight flow parameters will be automatically controlled with an accurate constant flow or through the advanced variable flow rate software. The required flow rates can be pilot selected or created by using MapStar<sup>®</sup> or FliteTrac advanced Multiple Feature Level software.



### Applications include:

- Aerial agricultural crop applications.
- Forestry applications
- Demanding eradication spray program

### Benefits:

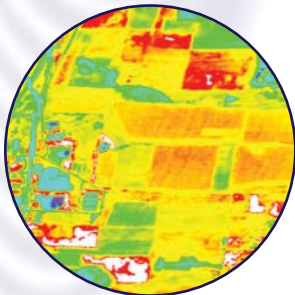
- Input control parameters directly through the pilot interface in the cockpit
- Reduces pilot fatigue due to flow control operation
- System can be set to operate and calculate in standard and metric measurements.
- System will interface to the Air M3 or Air Flying Flagman



### Mechanical Specifications:

Item	Height		Length		Width		Weight	
IntelliFlow	2.375"	6.03 cm	11.7"	29.7 cm	6.70"	29.7 cm	4 lbs.	1.8 kg
Spray-off Box	1.625"	4.13 cm	6.0"	15.2 cm	2.60"	29.7 cm	5 lbs.	2.3 kg
*Valve / Motor Assembly	10.0"	25.4 cm	5.5"	14.0 cm	3.75"	29.7 cm	14.25 lbs.	6.5 kg
*Meter	4.75"	12.06 cm	4.75"	12.06 cm	3.25"	29.7 cm	4 lbs.	1.8 kg
Cables							3.5 lbs.	1.6 kg

\* Measurements taken with 2 inch versions



## Key Air IntelliFlow Advantages

- Versatile Cockpit Display
- Hardware ready for advanced variable rate software
- Multiple amplifiers for dual turbines, hopper input and boom output
- Override switch to manually open valve if required
- Complete hardware, cables and sensors provided

Copyright © 2007 Hemisphere GPS. All rights reserved. Specifications subject to change without notice. Hemisphere GPS and the Hemisphere GPS logo are trademarks of Hemisphere GPS. Warranty: Each Hemisphere GPS product is covered by a limited one-year warranty on parts and labor.